

Welcome to Fire-i™ 2.5 and Fire-iAPI™ 2.5 for Windows Me/2000/XP

Introduction

Dear Customer,

Thank you for having purchased or upgraded to the new version 2.5 of **unibrain's** Fire-i™ software or Fire-iAPI™ development SDK.

Many efforts have been dedicated to improve the features of the software, but also, to simplify the installation process. Please take a few minutes reading this introduction; it is intended to let you make the best use of the improvements we have added.

For your convenience, a standalone executable version of the help file has been copied in the root of the software CD package, allowing you to discover all details of the software before installing it. For the Fire-iAPI™ SDK, this help is also a stand alone programming reference.

We will be pleased to receive your comments and suggestions at the following email address:
support@unibrain.com

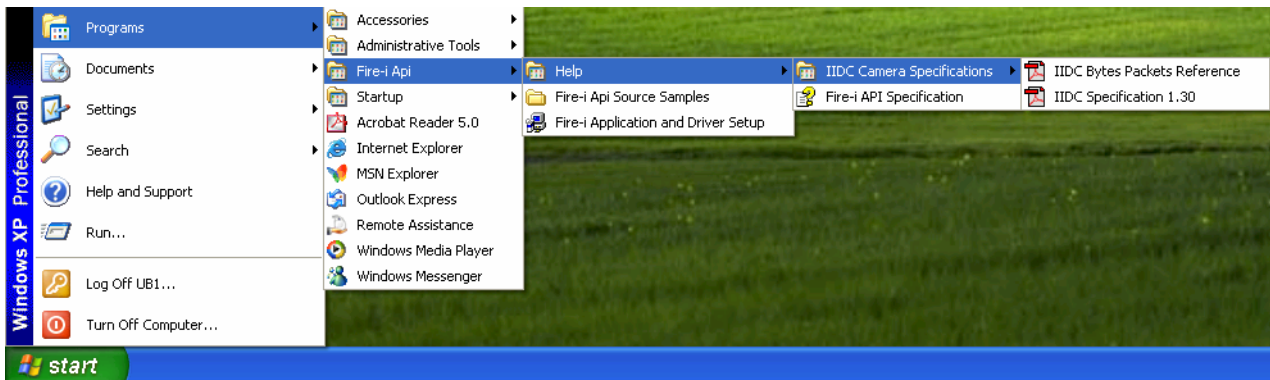
The unibrain Fire-i Development Team

Installation process

Just run the Setup file, your software package will fully install, including the collection of provided camera drivers, and the drivers handling the USB license keys.

For the Fire-iAPI™ 2.5:

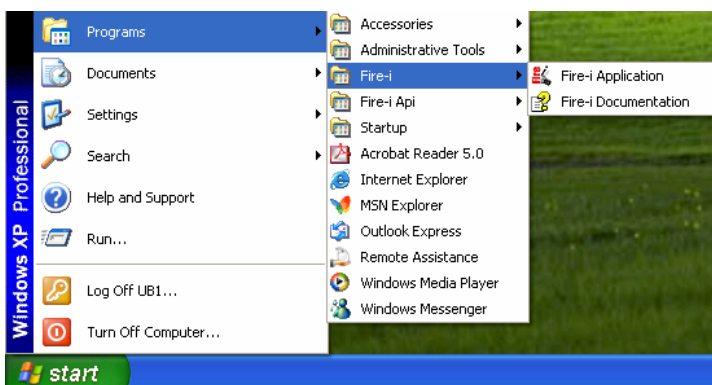
- Run first the [FireiAPISetup.exe](#) file from the root of your software package. This will install the full API documentation, the source code samples, some useful reference documents, and create the installer for the Fire-i application and drivers. You will find them all from the “Start” “Program” menu.



- Run then the “Fire-i Application and Driver Setup” directly from the “Start” “Program” menu, which will initiate a second setup equivalent to next paragraph.

For the Fire-i™ 2.5:

- Run the [FireiSetup.exe](#) file from the root of your software package. This will install the Fire-i application, all drivers and the documentation



Please note that DirectX8.1 or higher is required for proper operation. It is installed by default in Windows XP, but not in Windows Me neither in Windows 2000. For Me or 2000, please install DirectX8.1 from the DirectX8.1 folder of your software package.

In order to reduce its size, the downloadable version of Fire-i™ 2.5 software does not include this DirectX8.1 folder. You can find it by connecting to:

<http://www.microsoft.com/downloads/>

Camera drivers automatic installation

Some specific tools have been developed to simplify the recognition and driver installation of a newly connected IIDC 1394 Digital Camera. Please find hereunder the explanation of their behavior under the different operating systems.

1. In Windows Millennium.
 - a. The very first time you connect an IIDC 1394 Digital Camera, install its driver manually from the location where you accepted to install the Fire-i application.
Typically : X:\Program Files\Unibrain\Fire-i\Drivers (where X is your drive letter)
Please refer to the [Firei.chm](#) help file for detailed instructions on how to manually install the Fire-i camera drivers.
 - b. Every subsequently connected camera will be installed with the appropriate unibrain's driver on a totally **transparent way**.
 - c. Inside the Fire-i application, the "*Install Fire-i Drivers*" of the Action menu is inactive.
2. In Windows 2000
 - a. The very first time you connect an IIDC 1394 Digital Camera, install its driver manually from the location where you accepted to install the Fire-i application.
Typically : X:\Program Files\Unibrain\Fire-i\ Drivers (where X is your drive letter)
Please refer to the [Firei.chm](#) help file for detailed instructions on how to manually install the Fire-i camera drivers.
 - b. For every subsequently connected camera, you will be prompted to install the appropriate unibrain's driver. . Accept installations even if no digital signature.
 - c. From within the Fire-i application, if the camera logo does not appear, choose the "*Install Fire-i Drivers*" option of the Action menu.
3. In Windows XP.

A special procedure is used, due to very strict policy of XP about digital signature of drivers.

 - a. Accept every "Generic Camera" driver installation prompt suggested by Microsoft XP.
 - b. If not done yet, start the Fire-i application. At the first camera connection, a special prompt window may inform you that the application does not recognize yet any camera. Press on "Auto Install". Accept installations even if no digital signature.
 - c. From within the application, if the camera logo does not appear, choose the "*Install Fire-i Drivers*" option of the Action menu.

Special features of the unibrain's drivers:

1. A new driver will be installed for every new serial number, even for an already installed model. This allows individual recognition of cameras
2. Every camera, once installed, can be customized for name. A menu feature allows restoring the original manufacturer's name.
3. The latest valid used format, mode and frame rate of every camera ever installed will be automatically suggested as default the next time this camera is connected and operated.
4. For any models, unibrain's drivers add memories for picture settings, even if this feature is missing from the manufacturer. unibrain complements the available memories from the manufacturer up to a total of 6.

Detailed help

Extensive documentation and explanations have been included in Help files.

Help files are accessible from 3 different ways:

- within the application,
- from the Start Menu
- as standalone executable files, with [.chm](#) extension. For convenience, standalone help file has been copied in the root of the Software CD package, allowing you to discover the Software details before installing it.

Add-on's

The "Tools" folder includes [Amcap.exe](#) and [GraphEdit.exe](#) applications

New features

Fire-i™ 2.5 and Fire-iAPI™ 2.5 corresponding SDK bring you the following main new features:

- Compliance to IIDC 1.30 or lower
- Internet / Intranet TCP/IP streaming capability
- Support for setting camera features by using absolute units, both in read and write. If the camera enables the absolute setting for a feature, the corresponding display zone will appear on a white background instead of grey. To input an absolute value, just type it in there.
- DirectShow based drivers, WIA compatible in Windows Me/XP.
- RAW color coded Y-8 mode is converted for color display
- Y-16 coding is recognized and payload is passed.
- Generic driver for all IIDC 1.04, 1.20 and 1.30 compliant camera models.
- Specific drivers for models of Unibrain, ADS, AVT, Basler, Hamamatsu, JVC, MicroPix, OrangeMicro, PointGrey, Sony, Teli, Victor
- Flexible licensing by USB dongle key:
 - a. Two types of standard license USB dongles exist. The PRO dongle opens all features in all formats. The VGA dongle opens all features in Format_0 only (VGA, no partial scanning), allowing cost effective solutions for smaller cameras. The user decides what his best use is, the software keeps same.
 - b. Same licensing for Fire-i™ 2.5 and for applications generated using the Fire-iAPI™ 2.5
 - c. Easy license transfer from one PC to another
 - d. Backwards license compatibility with versions 2.0
 - e. No license needed for any **unibrain** camera
 - f. Demo mode : without license, non **unibrain** cameras can be operated with full features for 30 minutes, then will stop until next reboot.

